



**CoveStar**<sup>TM</sup>  
INVESTMENT REALTY ADVISORS

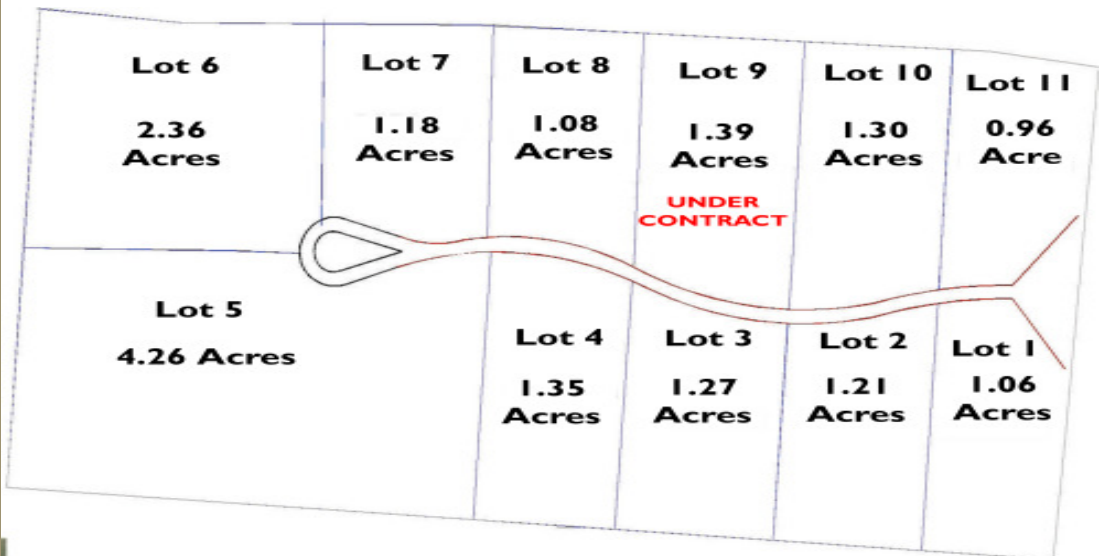
PORTFOLIO INVESTMENTS	CONSULTING	BROKERAGE	DEVELOPMENT
	www.covestarc.com		
main	828.274.4009	CoveStar, LLC	
fax	828.274.8831	932 Hendersonville Rd. Ste. 201	
		Asheville, NC 28803	

# BLUE ROCK COMMERCE CENTRE

McMurray Road  
Hendersonville,  
NC



Lot 1 - \$145,750  
 Lot 2 - \$166,375  
 Lot 3 - \$174,625  
 Lot 4 - \$185,625  
 Lot 5 - \$585,750  
 Lot 6 - \$324,500  
 Lot 7 - \$162,250  
 Lot 8 - \$148,500  
 Lot 9 - Pending  
 Lot 10 - \$178,750  
 Lot 11 - \$132,000



- **Parcels can be combined into larger tracts**
- **Close proximity to I-26. Location, location, location!**
- **Easy large truck access**
- **Flat topography**
- **Water, sewer and electric to site.**
- **Gas is available.**

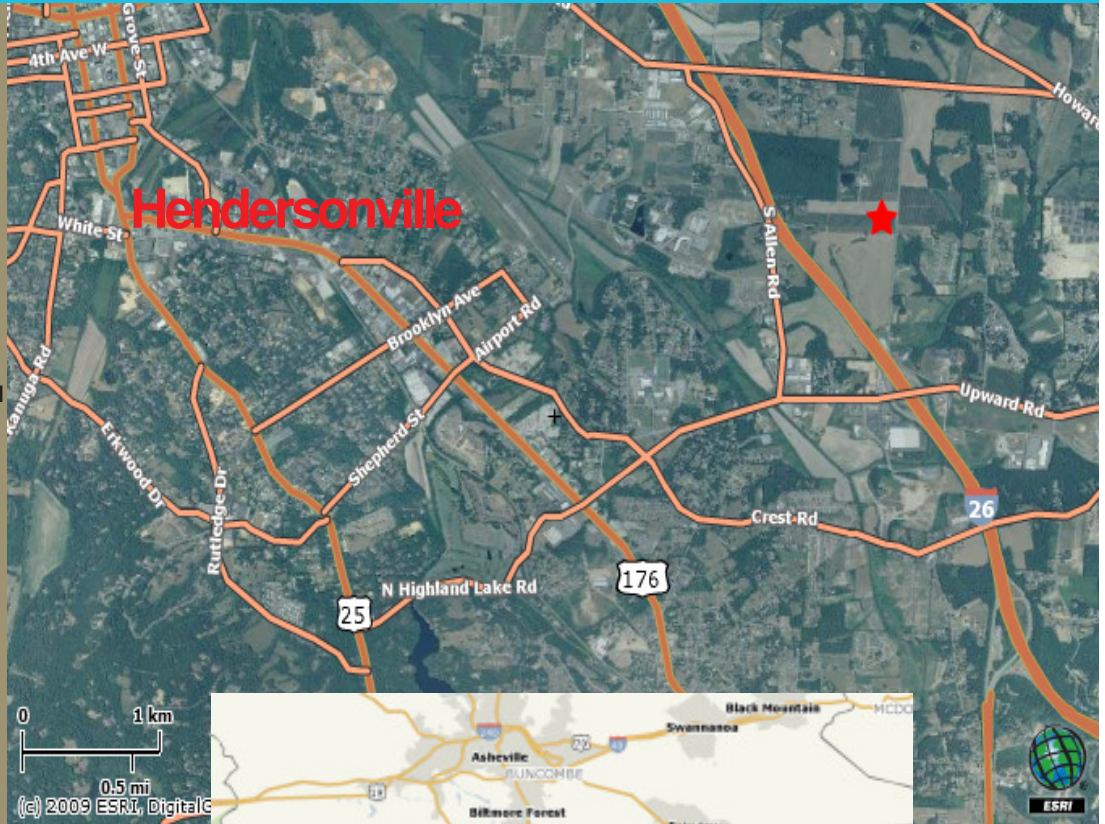
Curtis A. Burge, CCIM  
 Cell: 828-215-1931  
 caburge@covestarc.com

**CoveStar, LLC  
Investment  
Realty Advisors**

932 Hendersonville Rd. Ste. 201  
Asheville, NC 28803

Phone: 828-274-4009  
Fax: 828-274-8831  
Email: [corey@covestarc.com](mailto:corey@covestarc.com)

[www.covestarc.com](http://www.covestarc.com)



**DIRECTIONS:**

From I-26 East, take exit 53 for Upward Road. Turn Left onto Upward Rd, then Left onto McMurray Rd. Property will be on the Left.

**SITE/BUILDING DATA:**

19.09 Acres

**ZONING:**

Industrial/Residential 2 - Rural

**UTILITIES:**

On site

**SALES PRICE:**

\$137,500 per acre

**TAXES:**

\$1,154

**TO SHOW:**

CLO

**CONTACT:**

Curtis A. Burge, CCIM

**PIN#:**

9588-24-8226



*This information is believed to be accurate. We are not responsible for misstatements of facts, errors or omissions, prior sale, changes of price, or withdrawal from the market without notice.*